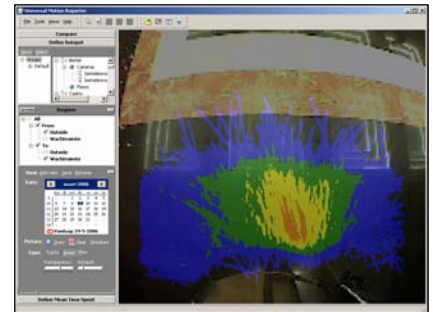




In an increasingly competitive market it pays of to know how you are performing and why. You do not have to rely on the instincts of your shop managers. You do not have to ask if they had a busy day. Because you already know.

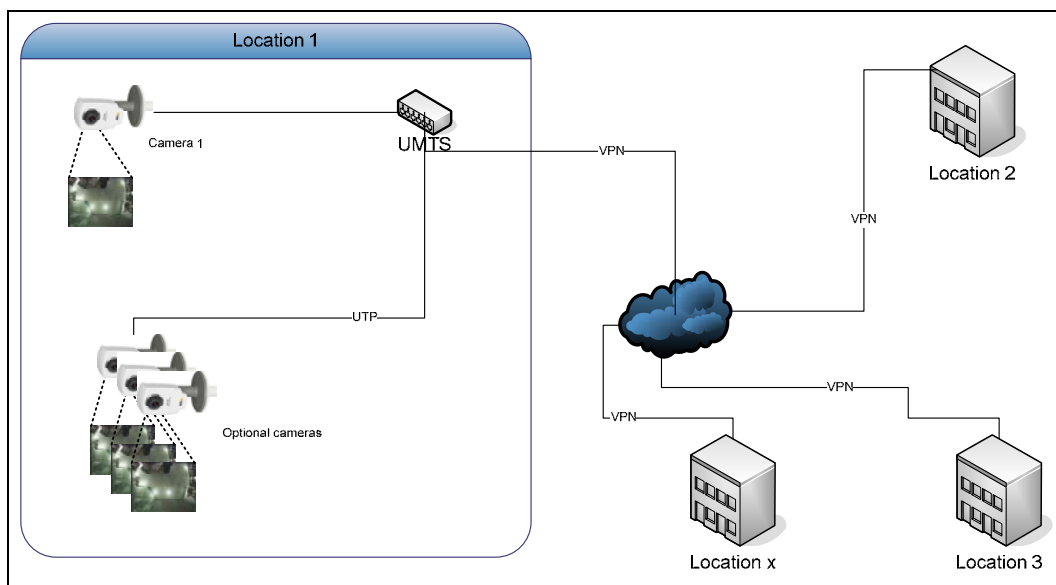
### Service

Because we know that what you want is not another way to create more work for you we have created a service for you. The service delivers you your reports in you mailbox when you want it. You can even visit your special website and log in to look for the reports from anywhere in the world. Installation, configuration and implementation are done by us.



### Example installations

- Routing public area  
In a main train station in Switzerland with only three cameras the routing is measured of all people passing through the main hall. As it turned out more than 80.000 people passed per 24 hours. But less then 15% passed the retail side of the hall.
- Routing and visitors shopping mall  
With 14 cameras visitors are monitored per department. The effect of marketing efforts is measured and trends are analyzed to be able to anticipate on visitor behavior and thus increase sales.
- Visitor analyses international retail chain  
A chain of now 7 retail locations wishes to monitor there international expansion. They now know how many visitors they had, each day. And they can monitor this real time, for every shop.
- Alarm routing  
A main airport in Sweden uses UMS to monitor the direction of the people walking through a hallway. If they walk the 'wrong' way, entering instead of exiting the hallway, the software warns the guards and closes a door, all automatically.



Interested? Send an email to [info@abstractcomputing.nl](mailto:info@abstractcomputing.nl) or give us a call on +31 (0) 294 750333.